

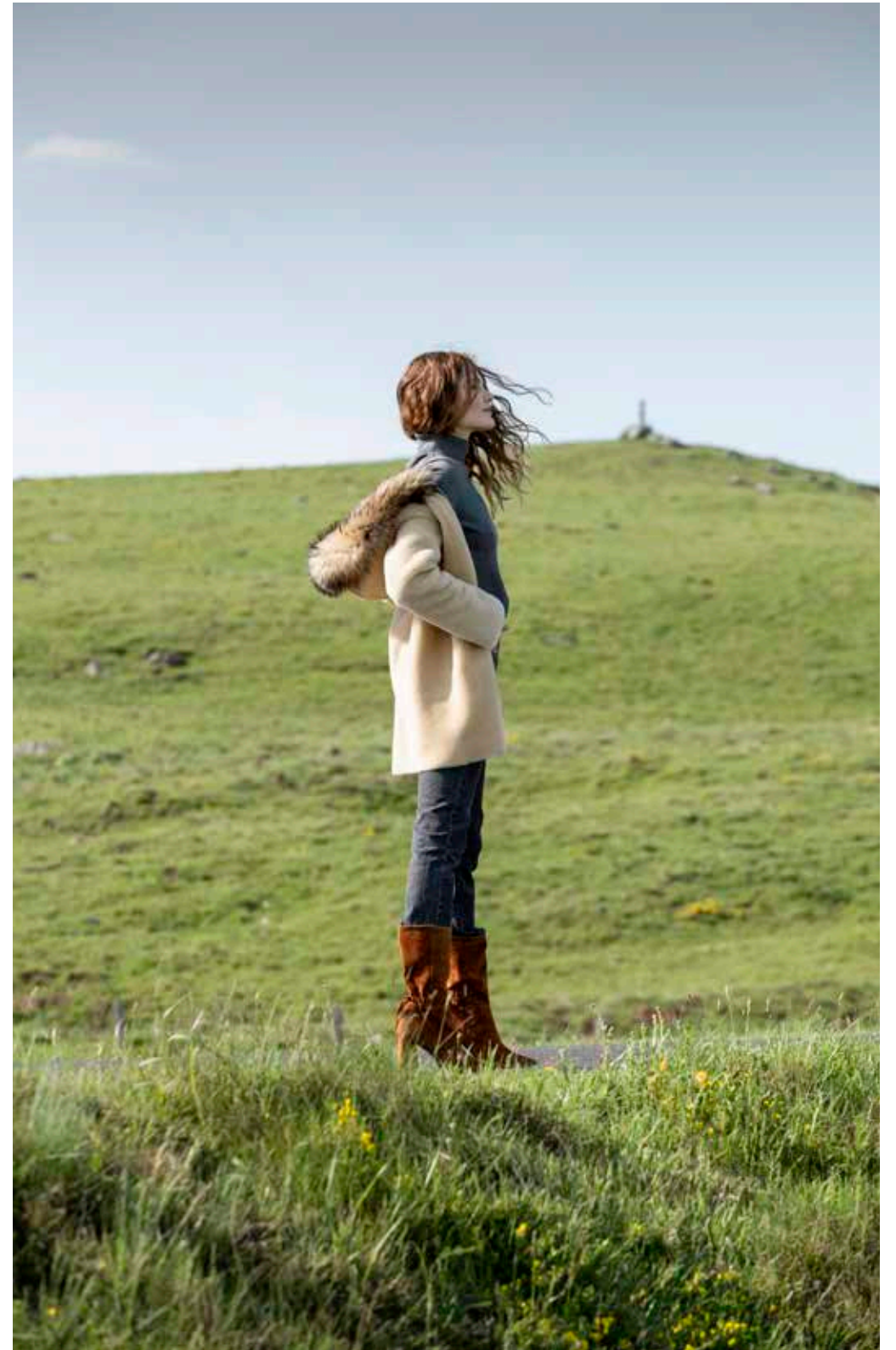


GIORGIO
& MARIO

PARIS

COLLECTION *e' Aubrac*
AUTOMNE
HIVER
19.20

FALL WINTER COLLECTION 19.20









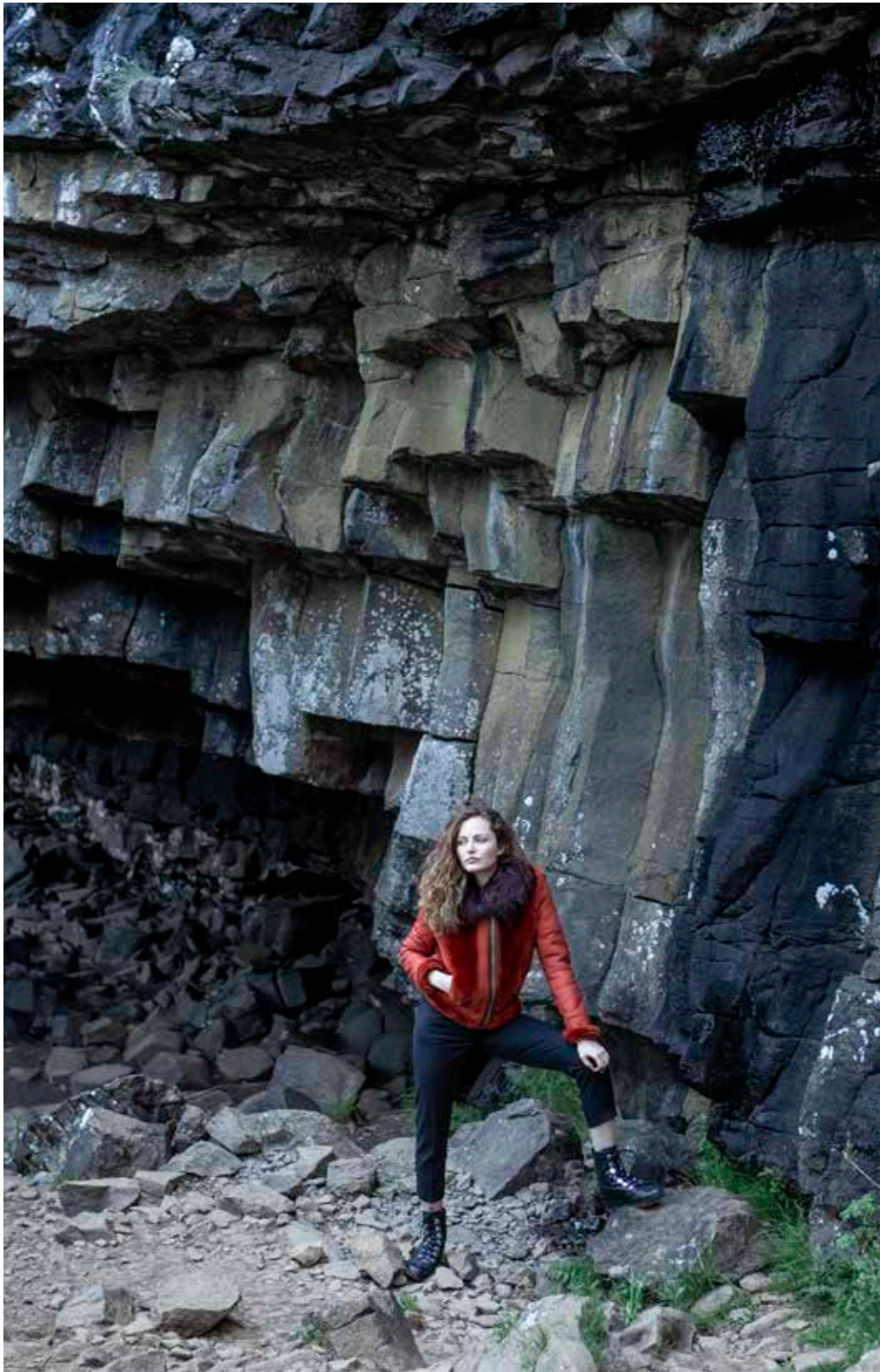




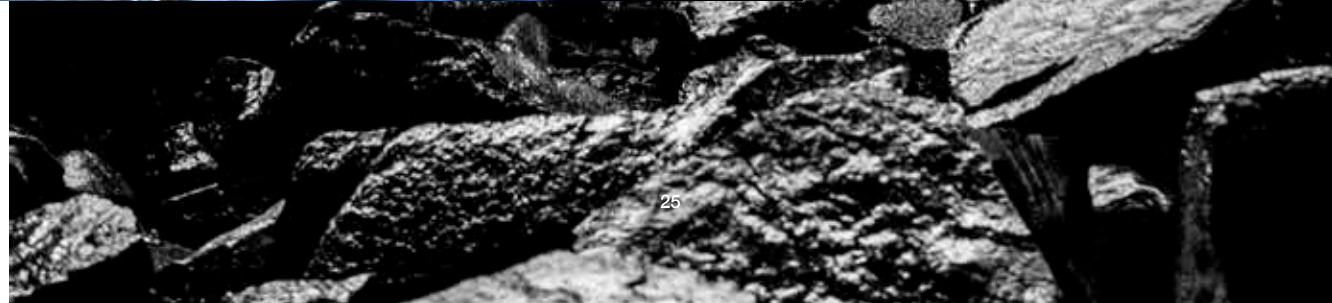


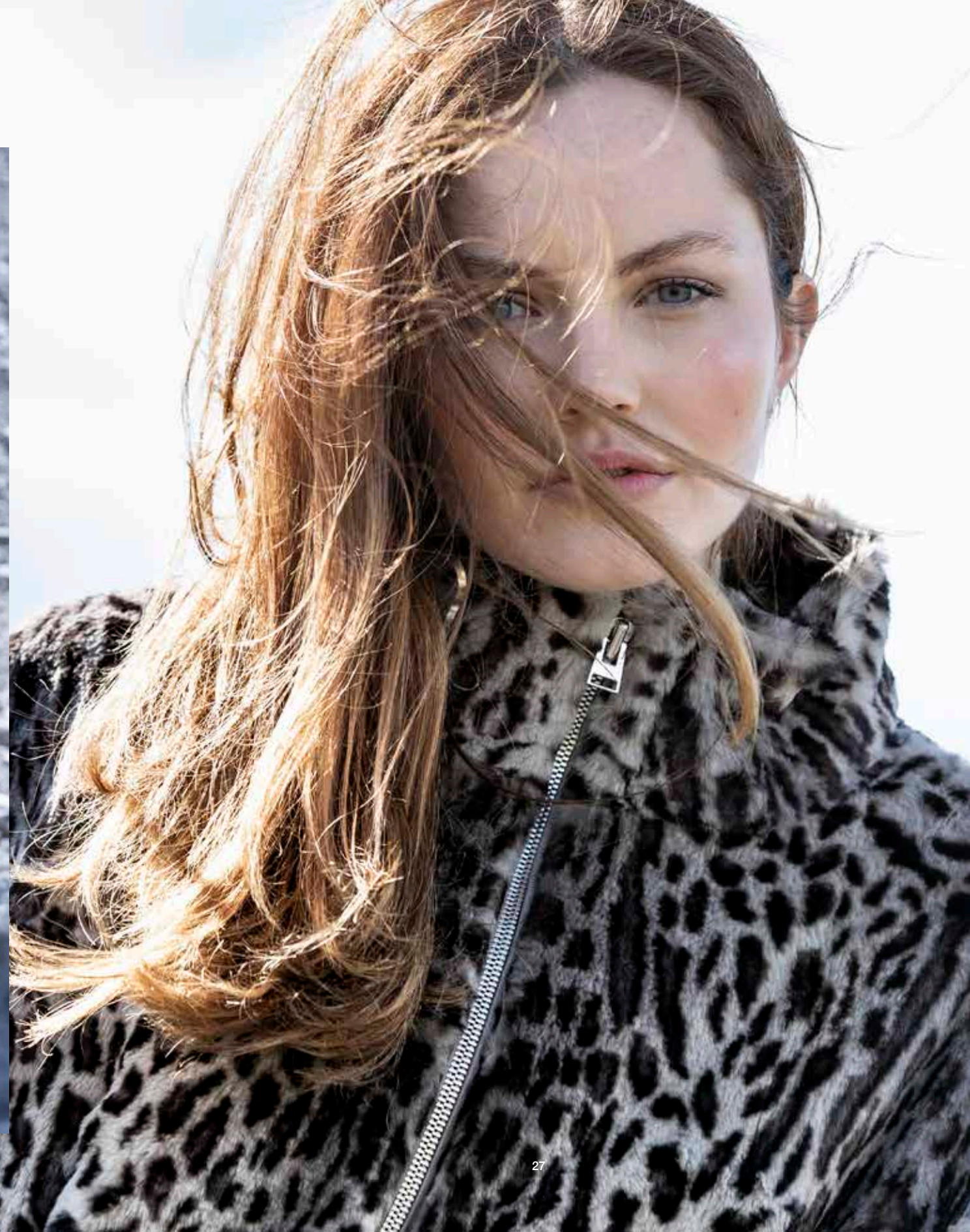














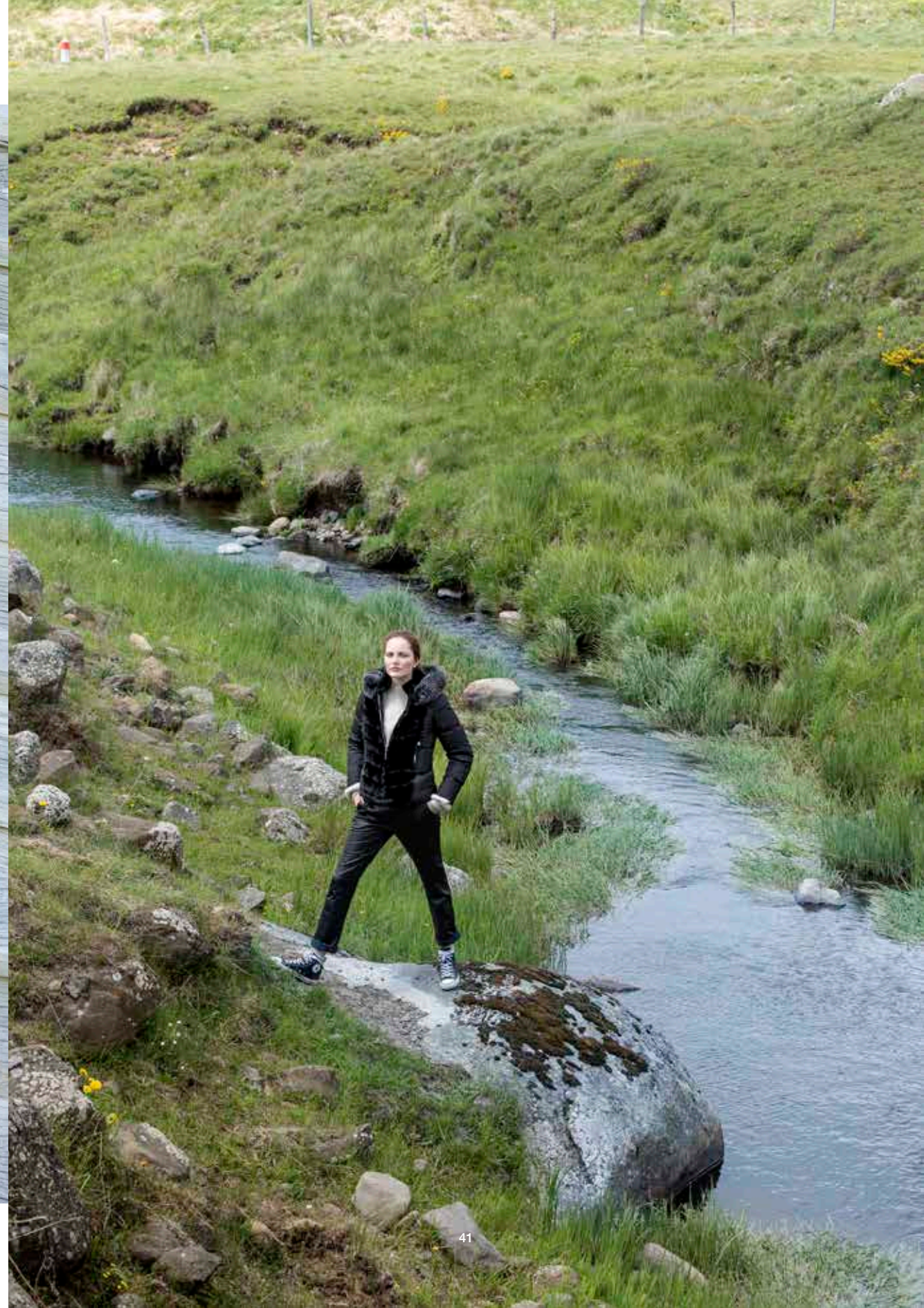














Couverture & Page 3 LIVY SOFT

Pages 4-5 MACUMBA Page 7 DARIELLA & LEGGINS

Pages 8-9 ANALA Page 10 SHANTTI REX Page 11 ANGEL COURT Page 13 ZABAL

Page 14 AGDA DF Page 15 LIVY SOFT Page 16 KINDRA DF & PANTALON HAPPY VEL

Page 17 NEILA LONG Page 19 LIBA REX & PANTALON GARÇONNE VELOURS

Pages 20-21 SKY FOX Pages 22-23 SUNNY Page 24 CORALISE Page 26 COLEEN WAXY

Page 27 MAYLI Page 29 ALYSEA Page 30 TOVA DF Page 31 BRUNA REX & PANTALON INES

Page 33 SHANTTI REX LONG Page 34 ALMIRA Page 35 TRUDIE VIS Page 36 ENOLA WAXY

Page 37 MACADAMIA & JUPE ADA WAXY Pages 38-39 MANBO Page 40 CASSANDRIE DF

Page 41 SWING & PANTALON PUMA AGORA Page 42 LISA DF

Dos de Couverture SAMANTHA SOFT

giorgio.fr

Giorgio & Mario   @giorgioleatherofficial

Photographie
& Direction Artistique
bertrandbremont.com
Réalisation
advision-studio.com



GIORGIO
& MARIO

PARIS